

Datasheet

Remote Air

Part Nr: 100624, 100625



About the product

The Remote Air is a flexible and mobile control device which brings all essential functions of an intelligent building into your hand. The well known Loxone switch standard as well as additional buttons for audio control. All that in a high-class design.

Features:

- 12 touch buttons, including 5 following the Loxone switch standard
- Predefined buttons for lighting, shading, and audio
- 3 freely configurable buttons
- High-quality casing
- Operates with two AAA batteries

Technical Data

Power supply	2x 1.5V AAA batteries (2.2 ... 3.6VDC)
Battery lifetime	18 months
Buttons	12

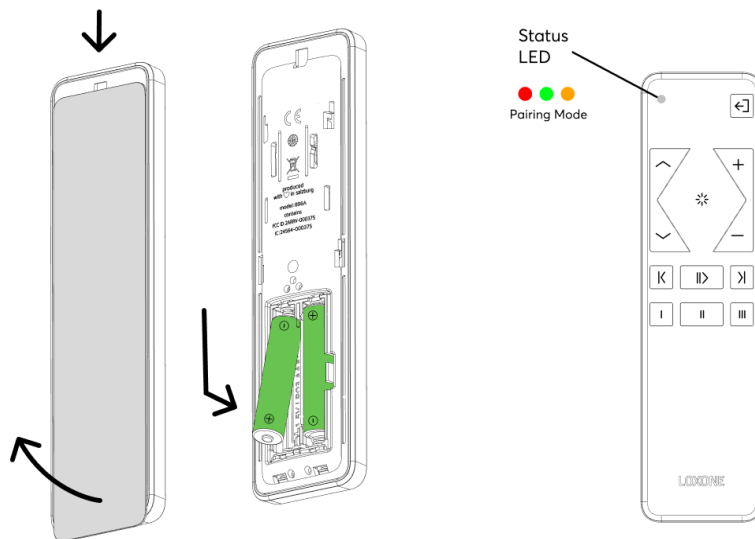
Loxone Air Interface

Frequencies & Channels	868MHz (SRD Band Europe), 4 channels, max. 15.1mW e.r.p. 915MHz (ISM Band Region 2), 10 channels, max. 13.2mW internal antenna
------------------------	--

Ambient Conditions

Operating temperature	5 ... 40°C / 41 ... 140°F
Storage temperature	-25 ... 65°C / -13 ... 149°F
Humidity	max. 95% r.H. (non condensing)
Ingress protection	IP20

Connection Diagram

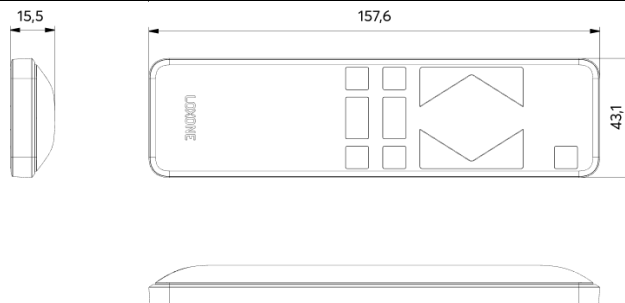


Product Characteristics

Colours	White: Part No. 100624 Anthracite: Part No. 100625
Finish	Matte

Weight & Dimensions

Net weight	65g
Total weight	110g
Product dimensions	157.6x43.1x15.5mm / 6.2x1.7x0.61" (LxWxH)



Pack size	205x54x22mm / 8.07x2.13x0.87" (LxWxH)
-----------	---------------------------------------

Certifications & Standards

Certifications	IEC 62368-1:2023 CE
----------------	-------------------------------

Published by

Loxone Electronics GmbH

Smart Home 1

4154 Kollerschlag

Austria

Tel: +43 7287 7070-0

loxone.com

Datenblatt

Remote Air

Art. Nr. 100624, 100625



Information zum Produkt

Die Remote Air ist ein flexibles und mobiles Steuergerät, das alle wesentlichen Funktionen eines intelligenten Gebäudes in Ihre Hand bringt. Der bewährte Loxone Tastenstandard sowie zusätzliche Tasten zur Audiosteuerung. All das in einem hochwertigen Design.

Features:

- 12 Tastflächen, davon 5 nach Loxone Tastenstandard
- Vordefinierte Tasten für Beleuchtung, Beschattung, Audio
- 3 frei definierbare Tasten
- Hochwertiges Gehäuse
- Betrieb mit zwei AAA-Batterien

Technische Daten

Spannungsversorgung	2x 1,5V AAA Batterien (2,2 ... 3,6VDC)
Batterie Lebensdauer	18 Monate
Tasten	12

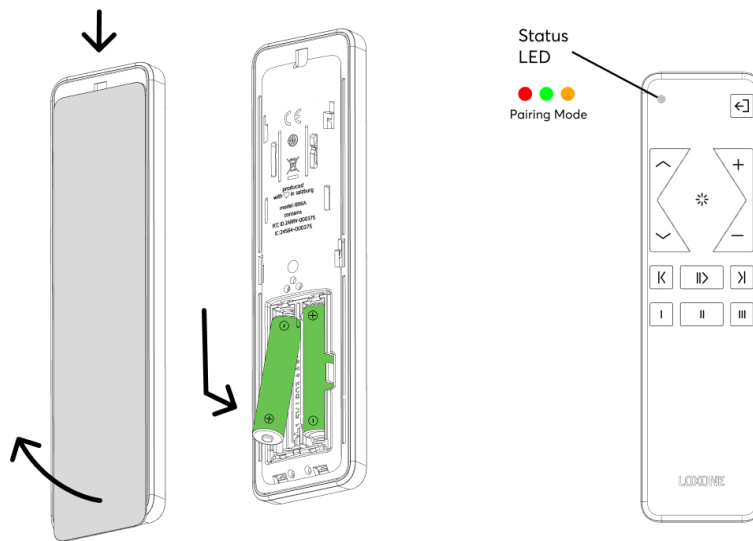
Loxone Air Schnittstelle

Frequenzen & Kanäle	868MHz (SRD Band Europa), 4 Kanäle, max. 15,1mW e.r.p. 915MHz (ISM Band Region 2), 10 Kanäle, max. 13,2mW interne Antenne
---------------------	---

Umgebungsbedingungen

Betriebstemperatur	5 ... 40°C / 41 ... 140°F
Lagertemperatur	-25 ... 65°C / -13 ... 149°F
Luftfeuchtigkeit	max. 95% r.H. (nicht kondensierend)
Schutzart	IP20

Anschlussplan

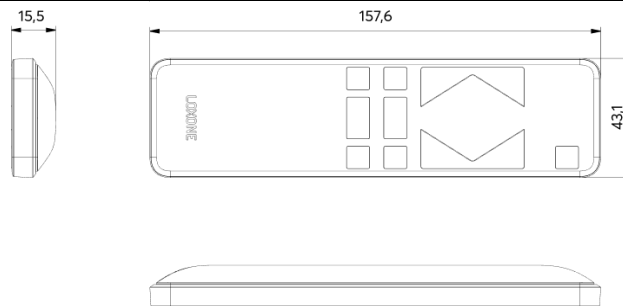


Produkteigenschaften

Farbe	Weiß: Art. Nr. 100624 Anthrazit: Art. Nr. 100625
Glanzgrad	Matt


Gewicht & Abmessungen

Nettogewicht	65g
Bruttogewicht	110g
Produktmaße	157,6x43,1x15,5mm / 6,2x1,7x0,61" (LxBxH)



Packmaß	205x54x22mm / 8,07x2,13x0,87" (LxBxH)
---------	---------------------------------------

Zertifizierungen & Standards

Zertifizierungen	IEC 62368-1:2023 
------------------	---

Veröffentlicht von

Loxone Electronics GmbH

Smart Home 1

4154 Kollerschlag

Austria

Tel: +43 7287 7070-0

loxone.com